

Weekly Report

2016 Week 14 (April 03 – April 09, 2016) through 2017 Week 14 (April 02 – April 08)

Department of Health and Human Services
Division of Public and Behavioral Health
Office of Public Health Informatics and Epidemiology



Brian Sandoval
Governor
State of Nevada

Richard Whitley, MS
Director
Department of Health and Human Services

Cody L. Phinney, MPH
Administrator
Division of Public and Behavioral Health

John DiMuro, DO, MBA
Chief Medical Officer
Division of Public and Behavioral Health

Data for the graphs and tables on the following pages are provisional and may be updated as additional information becomes available.

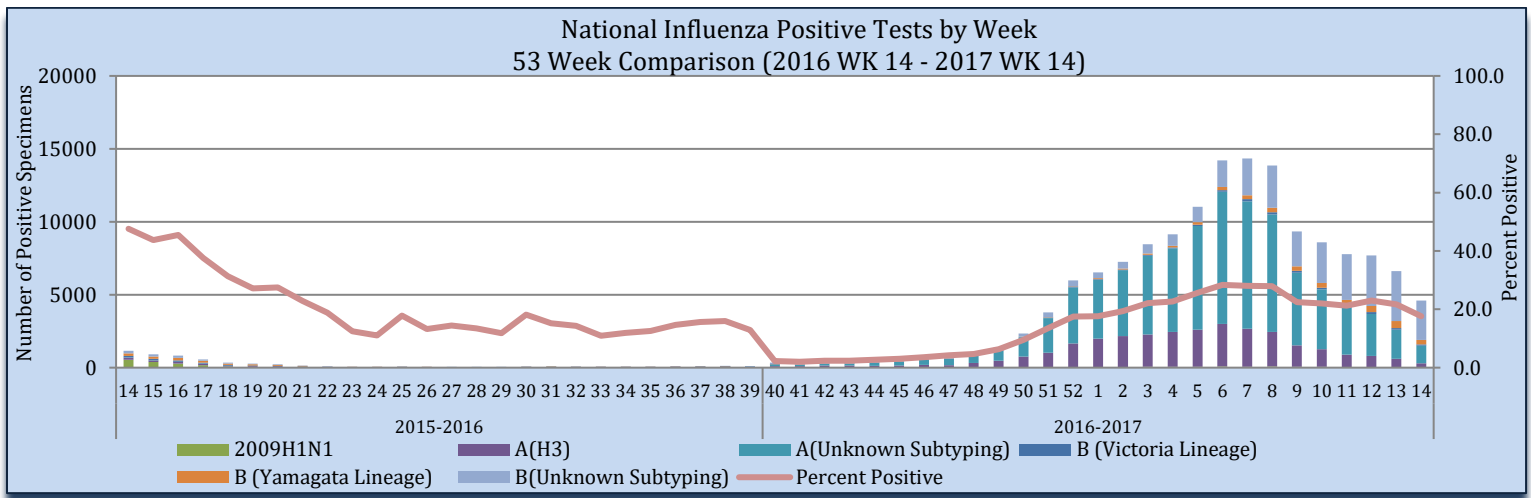
Purpose

The purpose of this report is to provide an overview of and statistics for the influenza season in Nevada for the local public health authorities, sentinel providers and the public.

Sentinel Provider Data: Influenza-Like Illness Network Surveillance (ILINet)

Respiratory specimens are tested for influenza by the World Health Organization (WHO) and National Respiratory and Enteric Virus Surveillance System (NRVESS) collaborating laboratories by sub-type. During week 14, there were 26,241 specimens collected and tested for influenza, of those 4,610 were positive (17.6%).

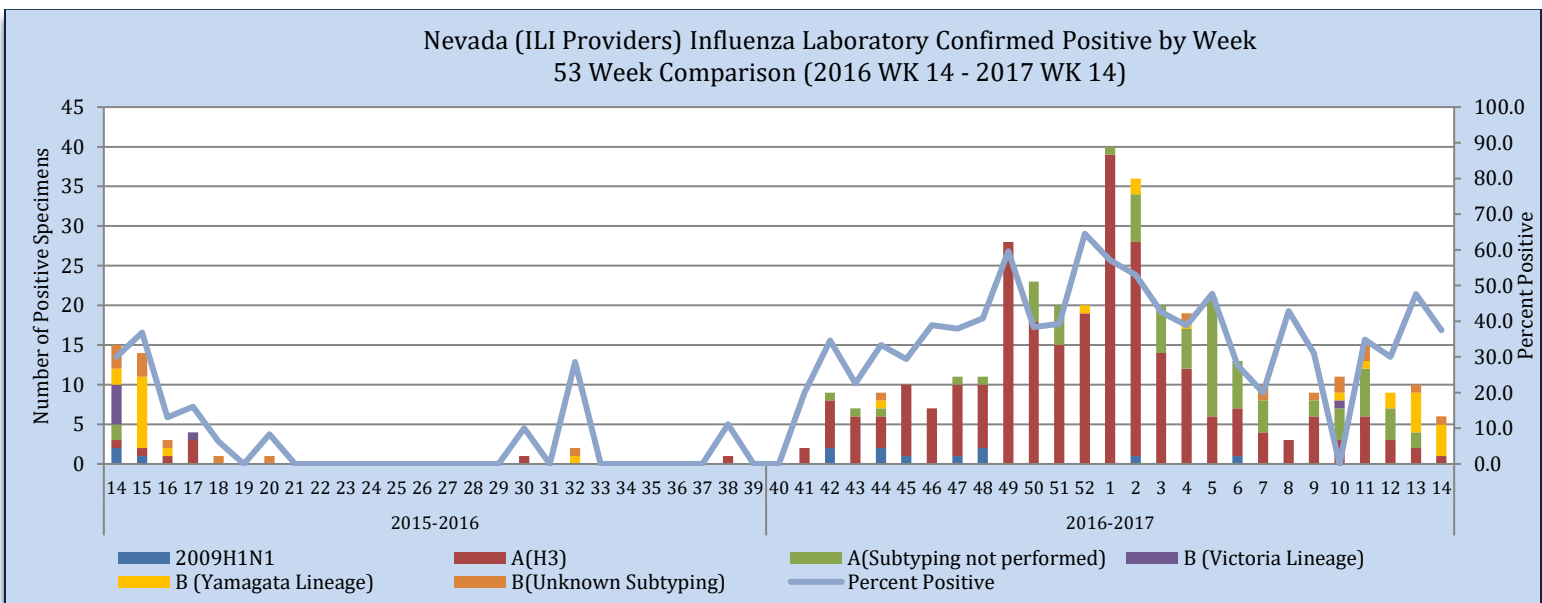
Figure 1



Source of Data: CDC: FluView Weekly Report.

The Nevada total includes laboratory tests for all Nevada residents tested by sentinel providers including out of state laboratories. During week 14, there were 16 specimens collected and 6 were positive. There is a two week delay for laboratory surveillance. Data are subject to change as we receive additional reports.

Figure 2



Source of Data: CDC: ILINet.

Nevada State Public Health Laboratory (NSPHL) has tested 320 specimens for influenza from sentinel providers, of which there have been 277 positive (86.6%). Southern Nevada Public Health Laboratory (SNPHL) has tested 61 specimens this season of which there have been 5 positives. Nationally, there have been 819,578 specimens sent to the WHO and NERVSS laboratories of which 147,836 have been positive (18%). The national numbers in Table 1 are reflected in Figure 1. The state of Nevada data in Table 1 is reflected in Figure 2. The Nevada total includes laboratory test for all Nevada residents tested by sentinel providers, including out of state laboratories.

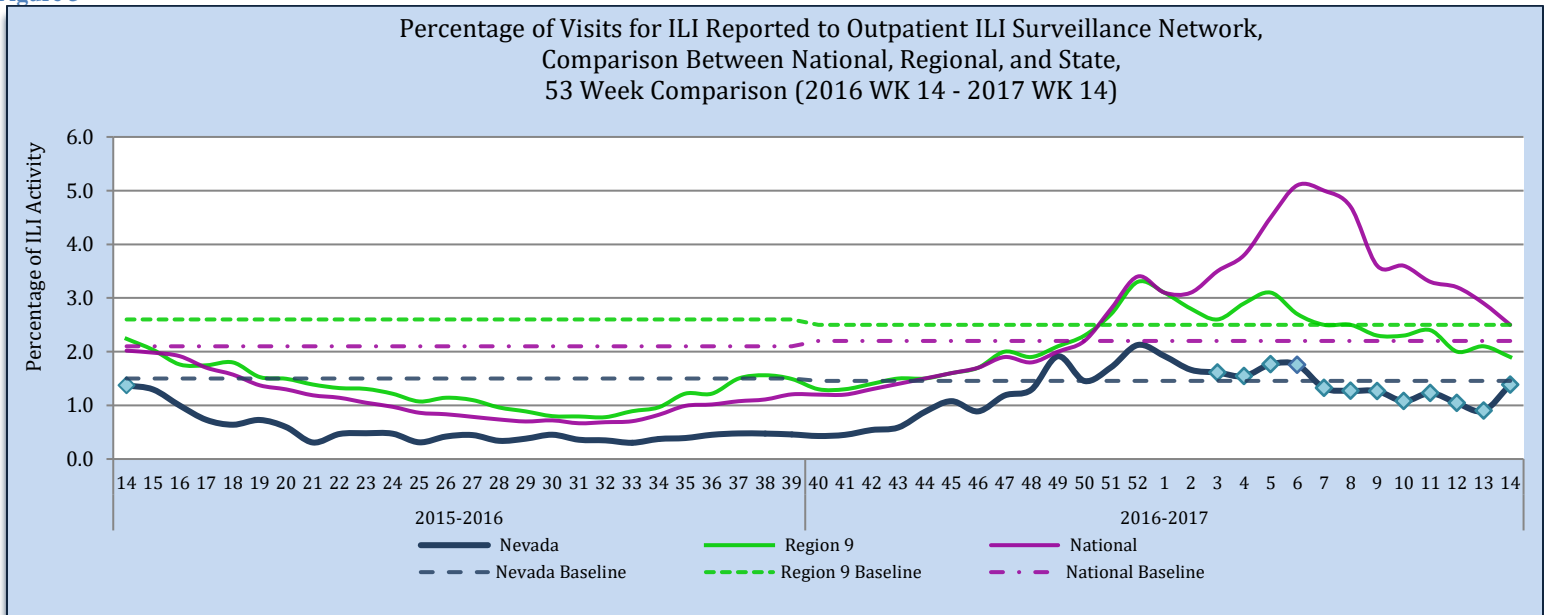
Table 1

	Influenza Specimens Tested State and Nationally through Sentinel Providers										
	NSPHL	SNPHL	All Other Laboratories	State of Nevada (Week 14)		State of Nevada (Season)		National (Week 14)		National (Season)	
				#	%	#	%	#	%	#	%
Specimens Tested	320	61	578	16		959		26,241		819,578	
Influenza Positives	277	5	97	6	37.5	379	39.5	4,610	17.6	147,836	18.0
Influenza A:	259	5	85	1	16.7	349	92.1	1,510	32.8	111,850	75.7
A (2009 H1N1)	9	0	1	0	0.0	10	2.9	13	0.9	840	0.8
A (H3)	250	5	8	1	100	263	75.4	291	19.3	29,502	26.4
A (Sub-typing not performed)	0	0	76	0	0.0	76	21.8	1,206	79.9	81,502	72.9
Influenza B:	18	0	12	5	83.3	30	7.9	3,100	67.2	35,986	24.3
B (Victoria Lineage)	1	0	0	0	0.0	1	3.3	74	2.4	1,648	4.6
B (Yamagata Lineage)	17	0	1	4	80.0	18	60.0	320	10.3	3,630	10.1
B (Sub-typing not performed)	0	0	11	1	20.0	11	36.7	2,706	87.3	30,708	85.3

Source of Data: CDC: FluView Report and CDC: ILINet.

Influenza-like Illness (ILI) Surveillance Network has each sentinel provider report the number of patients seen that meet the ILI case definition and the total number of patients seen for any reason each week. The “percentage of visits for ILI” is the number of ILI patients divided by the total number of patients visit per week. Nevada’s percentage of ILI visits for week 14 is 1.4% which is below the state baseline of 1.5%. Region 9 ILI percentage for week 14 is 1.9% which is the below the region baseline 2.5%. Region 9 includes the following states/territory: Arizona, California, Guam, Hawaii, and Nevada. The national ILI percentage for week 14 is 2.5% which is above the national baseline 2.2%.

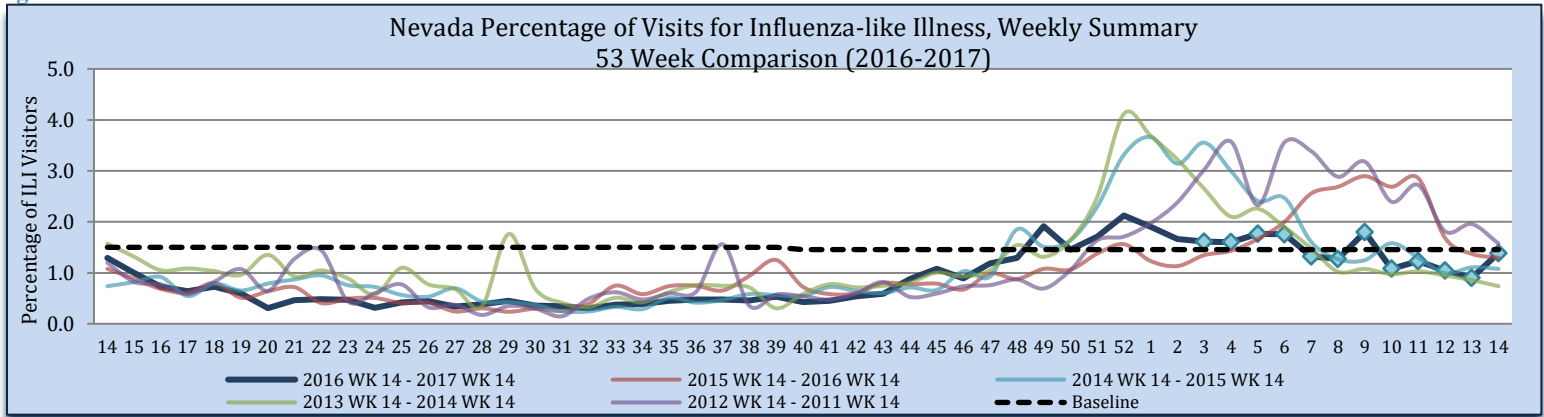
Figure 3



Source of Data: CDC: Flu View Report and CDC: ILINet.

During week 14, 1.4% of visits to sentinel providers were due to ILI; this is higher than the 2015-2016 influenza season (1.3%). There were 10,967 patients seen by sentinel providers during week 14, of which 152 patients presented with ILI; week 14 of 2016, there were 162 patients seen with ILI (16,281 total patients seen).

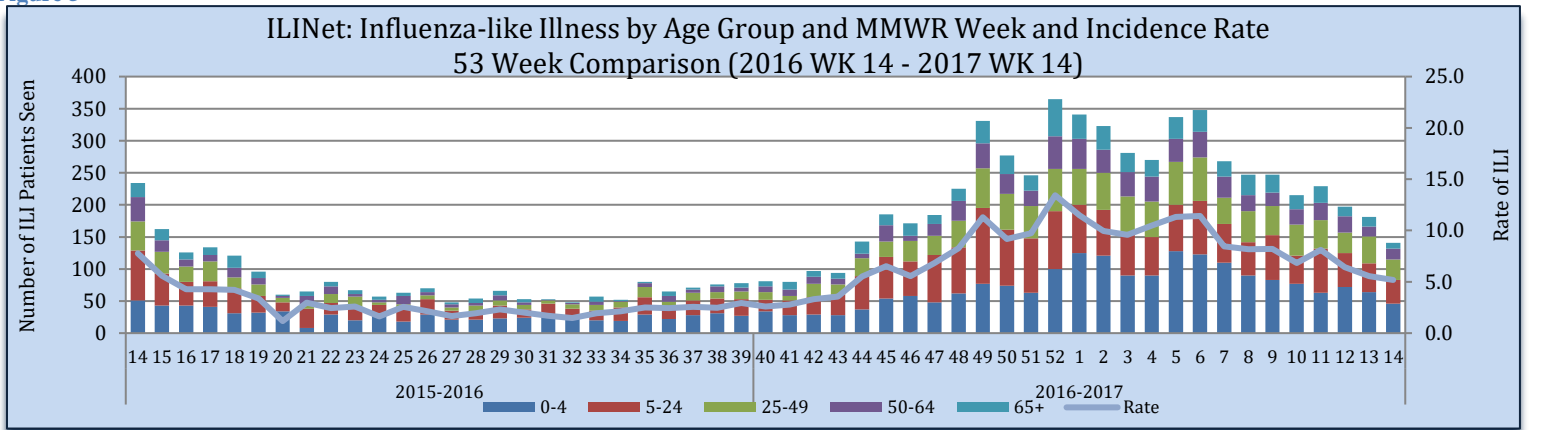
Figure 4



Source of Data: CDC: ILINet.

Influenza-like Illness is reported by age groups. During week 14, patients age 0-4 were the greatest number of patients seen with ILI, at 57 patients seen. The rate for week 14 is 5.2 per 100,000 population. The rate is calculated by the number of patients presented with ILI, divided by the state population, multiplied by 100,000. The estimated state population for 2017 is 2,935,490.

Figure 5



Source of Data: CDC: ILINet.

Influenza Positive Surveillance (NBS and NETSS)

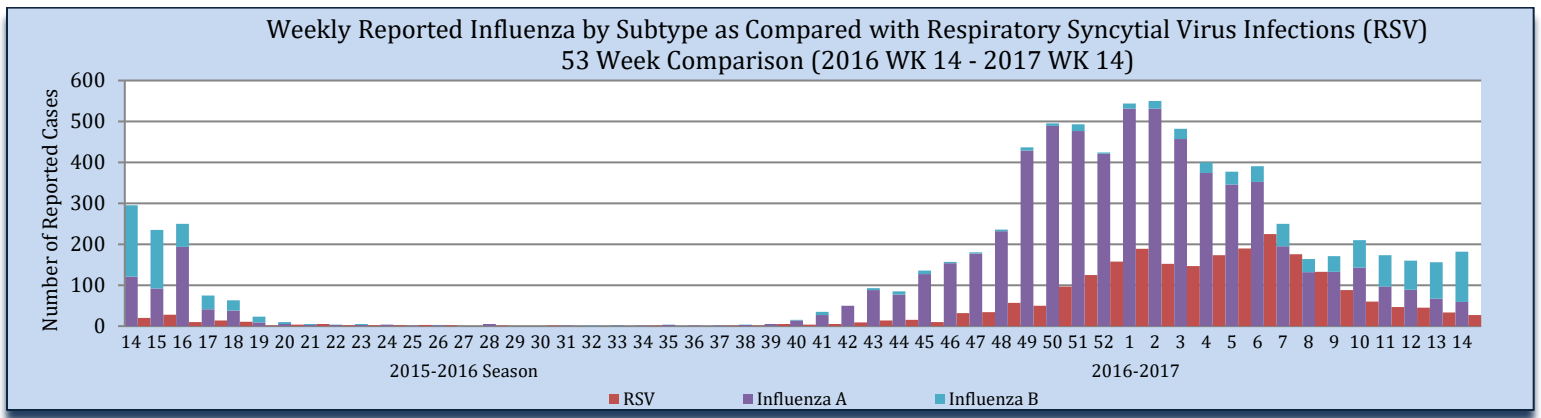
Positive cases of influenza are reported to the state health authority for surveillance purposes. Table 2 and Figure 6 reflect all positive influenza cases reported to the state. Types of influenza testing include commercial rapid diagnostic test (rapid), viral culture, fluorescent antibody, enzyme immunoassay, RT-PCR (PCR), and Immunohistochemistry. The two most common test types in Nevada are Rapid and PCR tests. During week 14, there were 192 influenza cases reported to the state, 59 influenza A, 123 influenza B and 10 unknown subtyping.

Table 2

Reporting Jurisdiction	Reported Influenza Cases by County Jurisdiction and Influenza Type							
	Current Week (Week 14)				Cumulative Influenza Season			
	A	B	Unknown	Total	A	B	Unknown	Total
Carson City Health and Human Services	4	12	0	16	818	49	2	869
Rural Community Health Services	0	3	0	3	581	41	37	659
Southern Nevada Health District	48	93	9	150	2,908	563	220	3,691
Washoe County Health District	7	15	1	23	1,969	125	143	2,237
State of Nevada	59	123	10	192	6,276	778	402	7,456

Source: OPHIE: NBS and SNHD: NETSS.

Figure 6



Source of Data: OPHIE: NBS and SNHD: NETSS.

Hospitalizations

There were 5 hospitalization associated with influenza reported to the state health authority for week 14.

Table 3

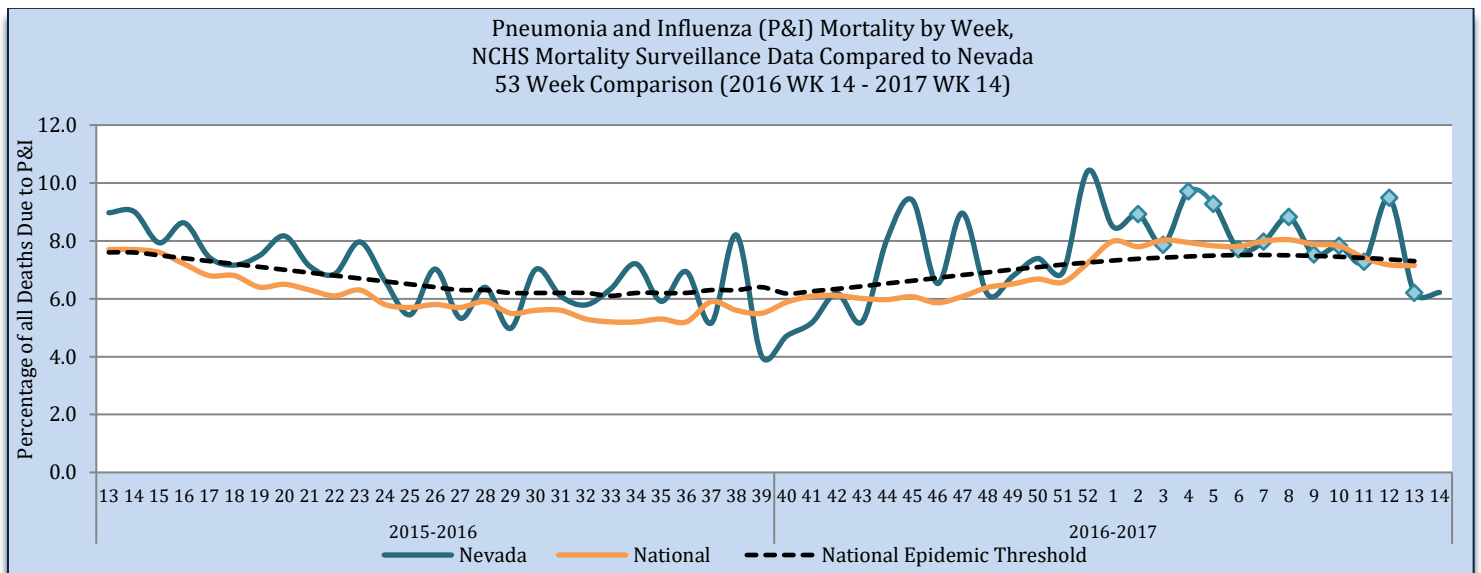
Reporting Jurisdiction	Influenza Hospitalizations			
	Current Week (Week 14)		Cumulative Influenza Season	
	#	%	#	%
Carson City Health and Human Services	0	0.0	31	6.1
Rural Community Health Services	0	0.0	18	3.5
Southern Nevada Health District	4	80.0	178	35.0
Washoe County Health District	1	20.0	282	55.4
State of Nevada	5	100	509	100

Source: Reported to Office of Public Health Informatics and Epidemiology from each Jurisdiction.

Pneumonia and Influenza (P&I) Mortality Surveillance

The Pneumonia and Influenza (P&I) mortality percentage is all deaths, where Pneumonia or Influenza is listed as the underlying or contributing cause of death, divided by the total deaths in Nevada for each week. As of April 27th, there were 24 P&I deaths and 386 total deaths for week 14 in Nevada. The CDC's most up-to-date National and National Epidemic Threshold data was for week 13.

Figure 7



Source: OVR: WEVRRS and CDC: FluView.

Technical Notes

- Data are subject to changes, additionally, there is a lag in reporting.
- Influenza surveillance procedures vary by jurisdiction.
- Influenza-like illness (ILI): a fever greater than or equal 100°F with cough and/or sore throat.
- Percent positive: The number of positive influenza laboratory tests divided by the total number of tests performed.
- Incidence rate is per 100,000 population as estimated by the state demographer.

This report contains information from national and state-level data sources. Influenza surveillance data is collected by a various systems, including:

- Influenza-like Illness Network (ILINet): a sentinel surveillance system in collaboration with the Centers for the Disease Control and Prevention (CDC) where outpatient providers report ILI information weekly.
- National Electronic Telecommunication System for Surveillance (NETSS): a system whereby data is transmits to CDC. Influenza data collected through NETSS does not provide influenza sub-typing information.
- National Electronic Disease Surveillance System (NEDSS): a system for collecting data and monitoring disease trends and outbreaks.
- NEDSS Based System (NBS): an implementation of the NEDSS standards. It provides a secure, accurate, and efficient means of collecting, transmitting, and analyzing public health data.

Citations

1. CDC. FluView: A Weekly Influenza Surveillance Report. <http://www.cdc.gov/flu/weekly/pastreports.htm>.
2. Nevada State Demographer's Office. 2003-2020 ASRHO Estimates and Projections. Division of Public and Behavioral Health edition. Vintage 2015.
3. OPHIE. DPBH. NBS. 2015-2017. Accessed April 2017.
4. Office of Vital Records (OVR). DPBH. Web Enabled Vital Records Registry System (WEVRRS) [unpublished data]. 2015-2017. Accessed April 2017.
5. Southern Nevada Health District (SNHD). NETSS/Trisano. 2015-2017. Accessed April 2017.

Comments, suggestions, and requests for further information may be addressed to:

**NEVADA INFLUENZA SURVEILLANCE PROGRAM
OFFICE OF PUBLIC HEALTH INFORMATICS AND EPIDEMIOLOGY
500 DAMONTE RANCH PKWY, STE 657
RENO, NV 89521
TEL: (775) 684-5289
FAX: (775) 684-5999**

Compiled and Written by:

Liliana E. Wilbert, MPH

Reviewed by:

Jennifer Thompson
Melissa Peek-Bullock

Recommended Citation:

Division of Public and Behavioral Health. Office of Public Health Informatics and Epidemiology. Influenza Weekly Report, 2016 Week 14 (April 03, 2016) through 2017 Week 14 (April 08), Nevada. May 2017 i 10 edition 1.0.

This publication was supported by Cooperative Agreement Number TP000534-02 from the Centers for Disease Control and Prevention and/or Assistant Secretary for Preparedness and Response. Its contents are solely the responsibility of the authors and do not necessarily represent the official views of the Centers for Disease Control and Prevention and/or Assistant Secretary for Preparedness and Response.

